



Respectfully Presented by:

ARCHITERRA
DESIGN GROUP



PROPOSAL

April 8, 2024

LANDSCAPE ARCHITECT SERVICES

DIRECTED TO:

City of Murrieta
Development Services Department
1 Town Square
Murrieta, CA 92562



ARCHITERRA
DESIGN GROUP
LANDSCAPE ARCHITECTURE AND PLANNING

March 27th, 2024

City of Murrieta
Development Services Department
Attn: Valerie Mendoza, Management Analyst
1 Town Square
Murrieta, CA 92562

REQUEST FOR PROPOSALS LANDSCAPE ARCHITECT SERVICES

Dear Ms. Mendoza,

Architerra Design Group is pleased to respond to the City of Murrieta's Request for Proposal for Landscape Architect Services for On-Call Landscape Plan Check and Design Consultation Services. Our proven plan check track record is your assurance that we can address your needs in a timely and accurate fashion and our relevant experience showcases our ability to successfully complete the plan review services that the City desires. We have worked directly for many municipalities and public agencies as on-call Landscape Architects for plan-checking and inspection services.

We know Murrieta. Since 2019 ADG has provided quality plan check and inspection services for the City of Murrieta. We have planning and design experience throughout the Inland Empire and are familiar with the "Murrieta Community Services Department Landscape Standards Booklet," along with our thorough understanding of the City's Master Plan, Development Code, and recently adopted Objective Design Standards. Our relative experience highlights our ability to perform complex landscape design and planning projects for both public and private entities. As a leader in the design of sustainable, water-wise landscapes within the Inland Empire, we remain current in our knowledge of all State and County water mandates and guidelines.

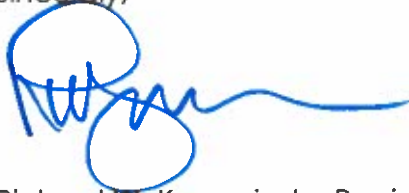
Our staff is uniquely qualified to meet and exceed City requirements and expectations. In addition to our work with the City, ADG currently provides landscape and irrigation plan check services for the Cities of Wildomar, Menifee, Baldwin Park, San Gabriel, Signal Hill, San Dimas, Moorpark, and Chino. Project management and plan review will continue to be managed by Jennifer Lioy, our Municipal Plan Check Coordinator. She possesses over a decade's worth of landscape design, plan checking, and administration services for local municipalities and will serve as the City's main contact with ADG. ADG's president, Richard Krumwiede, and licensed landscape architect (PLA#2834), will be the principal landscape architect providing project and staff oversight for all plan review and

design services. Neil Mayes (C27 #1010625) will continue to provide inspection services. Our licensed landscape architect, Kay Kite (PLA#6760), is also a certified water auditor, and can provide water audits for the City as needed.

As owner and President, I am authorized to submit proposals and negotiate fees and terms on behalf of Architerra Design Group. I certify that all information contained herewith is accurate and true. Our address and contact information are included on our letterhead.

I want to personally thank you for your continued interest and trust in our firm. I look forward to maintaining our successful partnership.

Sincerely,

A handwritten signature in blue ink, appearing to read 'Richard W. Krumwiede', with a long horizontal flourish extending to the right.

Richard W. Krumwiede, President, PLA#2834

rkrumwiede@architerradesigngroup.com

(909) 484-2800 ext. 1002

www.architerradesigngroup.com



ARCHITERRA
DESIGN GROUP
LANDSCAPE ARCHITECTURE AND PLANNING

Request for Proposals City of Murrieta Landscape Architect Services

Table of Contents

Company Overview	1
Team Resumes & Qualifications	3
Organizational Chart	7
Work Plan – Landscape and Irrigation Plan check Services	7
Quality Assurance Program	11
Professional Fees	13
Conflict of Interest Statement	14
References & Relevant Experience	14

Appendix

- Examples of Work

Company Overview

Architerra Design Group (ADG) is a design-driven, client service-oriented, fully insured professional landscape architectural and site-planning firm, licensed in California. Richard Krumwiede, a licensed Landscape Architect, established the firm in 1991 and has over 40-years of personal experience in the landscape design and construction industry. Mr. Krumwiede provides design oversight, and the office operates under the umbrella of his California License #2834.

In our 33-years in business, ADG has developed a reputation for accurate plan review and site inspection services for municipalities throughout Southern California, beginning in 1998 for the City of Rancho Cucamonga. Currently, we are contracted to provide landscape plan check, and inspection consultation services to the following cities (since): San Dimas (2009), Wildomar (2016), Murrieta (2017), Baldwin Park (2019), Chino (2019), Menifee (2019), Moorpark (2021), Signal Hill (2021) and San Gabriel (2022). We provide each City with tailored peer review and plan conformance for their development standards and local landscape water use ordinances. Additionally, we were one of two firms recently contracted with the City of Hesperia to perform their plan check review services pertaining to their Tapestry Specific Plan.

Our plan review methods have been refined and updated throughout the years to comply with the most up to date requirements of the strict California Model Water Efficient Landscape Ordinance, and we continue to employ and assist the City in the refinement of the City's "Landscape Architectural Plan Check List" to ensure attentive, thorough and most of all accurate results and conformance with all with the "City of Murrieta's Water Efficient Landscaping Ordinance" for consistency with the established City's Landscape Standards. We have been at the forefront of water efficient landscape design and planning and are no strangers to robust WELO compliance, having performed these tasks for multiple public agencies and private developers.

As demonstrated in the services and scope outlined below, our expertise covers a broad range of complex landscape design and planning services with an ability to review and apply fire code requirements, stormwater regulations, and biology reports to our analysis and review, along with that ability understand and review and the application of the various requirements of State and Federally mandated acts including but not limited to the Federal and State Endangered Species Act, Clean Water Act, Porter-Cologne Act, and California Water Quality laws along with all applicable Land Use and Planning laws.

Public Agency Services

The list below briefly outlines the types of projects, and specialized services, provided by ADG to various Municipal Agencies.

1. Municipal contract plan-check services.
2. Site Inspections and Certifications for residential, commercial, and public projects.
3. Preparation of landscape architectural conceptual design, construction documents, and construction administration for the following types of projects:

- Public Parks/Recreational Master Planning.
 - Streetscapes, Median Islands, and Entry Monuments.
 - Multi-Use Trails, Both Urban and Natural Open Space.
 - Municipal Buildings (Fire and Police Headquarters/Stations, Schools, Community Centers).
 - Natural Open-Space Preserve Planning.
 - Specific Plans and Design Guideline Preparation.
 - Urban Redevelopment Projects.
 - Work Force Housing Projects.
 - Community Gardens.
 - Natural Habitat Restoration.
 - Constructed Wetlands and Urban Runoff Detention/Retention Water Quality Basins.
 - Water Conservation and Rehabilitation Projects Focusing On “Green and Sustainable” Landscape Practices with Interpretive Educational Elements.
4. Irrigation Water Use Audits (in-house certified irrigation designer and auditor) as required to comply with AB 1881.
 5. Both preliminary and final cost estimating services.

Team Resumes and Qualifications

RESUMES

As previously mentioned, our primary team will consist of Richard Krumwiede, Gregg Denson, Jennifer Liroy, Peter Dalman and Neil Mayes (resumes below). We have also included the resume of Kay Kite for water audits. We do not need to use sub-consultants to complete our services. Jennifer will be the City's main point of contact for plan reviews and coordination. All representatives work at our office in Rancho Cucamonga, and can be reached by our main phone number, (909) 484-2800.

President: Richard Krumwiede, ASLA, PLA #2834



Mr. Krumwiede is a hands-on principal, who participates throughout all phases of ADG projects. He conducts design development and administration on a wide range of projects including parks, community master plan design, public schools, model homes, multi-family, and streetscape projects.

Mr. Krumwiede has delivered multiple presentations on water efficient landscaping at the ACWA (Association of California Water Agencies) conferences, as well as training various cities and home developers regarding the State's Water Ordinance AB-1881.

He was recently President of the Southern California Chapter of the American Society of Landscape Architects (ASLA). Honors and Awards include numerous city beautification awards, as well as commendations for Model Home and Master Planned Community Designs. In 2007, he was awarded an ASLA Honor Award for garden design and his home and gardens were featured in Sunset magazine's July 2007 issue.

His 40-years of experience includes designing all categories of landscape architectural projects including private and commercial projects, corporate campuses, district headquarters (water, fire, police), civic centers/city halls, public parks, master planned communities, specific plans, model homes, custom estates, college campuses and sports fields, K-12 schools, trails and open space.

Mr. Krumwiede will provide plan check oversight and design evaluation when needed.

He was born in Upland, California, and graduated from Cal Poly, Pomona with a Bachelor of Landscape Architecture in 1984. He is currently licensed as a landscape architect in California (#2834).

Email: rkrumwiede@architerradesigngroup.com

Director Of Design – Gregg Denson ASLA, PLA #4302



As Director of Design, Mr. Denson is responsible for overseeing all aspects of project design from inception to completion. His duties include participation in client contact, design development, and finalization of all formal design exhibits.

Mr. Denson designs some of the firm's most challenging projects. The talented team he heads up works on projects focusing on sustainable design for open space public gathering areas, retrofits of existing public facilities for resource conservation, specific plan developments for master planned communities, schools, mixed-use residential developments, trail planning, and open space preserve enhancement

projects. He works with staff to prepare any graphic sketches and sections detailed in the scope of services.

Mr. Denson has a Bachelor of Science in Landscape Architecture from California State Polytechnic University, Pomona, and provides more than 25 years of design experience to the firm. He is currently licensed as a landscape architect in California (#4302). He is also a native plant enthusiast who utilizes his own residence for studying the growth characteristics and water requirements of California native plants.

Mr. Denson will provide the City with another layer of experience and expertise in any design issues that may need review, including aspects in preservation of character, the enhancement of commercial and industrial areas, community cohesiveness, elements of revitalization, development of quality spaces, and enhancement of open spaces.

Email: gdenson@architerradesigngroup.com

Municipal Plan Check Coordinator: Jennifer Lioy



Ms. Lioy comes to ADG with nearly a decade's worth of professional, high-level landscape design and construction experience. Her experience as Project Manager and Landscape Designer for a diverse portfolio of private residential and commercial projects has made her well suited to perform accurate plan review services.

Raised in the Mojave Desert, Ms. Lioy has a lifelong love for environmentally sustainable landscape design. She received her bachelor's in environmental studies at the University of California, Santa Barbara, and Landscape Architecture at University of California, Los Angeles.

Jennifer's most valuable skill is her ability to analyze and review landscape design plans to produce effective, balanced solutions. She is known for her reliability, confidence, and

warm, positive outlook. Her licensure is pending final exams where she has so far passed three of the four on the first attempt.

She provides all the plan check services and coordination for our list of municipal clients, as well as participates in design review committees, development of landscape design guidelines and standards, and coordinates all site inspections.

Email: jlloy@architerradesigngroup.com

Project Manager: Peter Dalman, PLA #5488



Mr. Dalman will provide plan checking and management coverage for when Jennifer may be out of the office.

Mr. Dalman joined ADG in 2018, after nearly 20 years of professional experience providing landscape design and construction management at some of the finest landscape architecture firms in Southern California, including Disneyland Studios. His portfolio includes a wide variety of municipal, public agency and private development projects.

He earned a Bachelor of Science in Landscape Architecture with a minor in ornamental horticulture from California State Polytechnic University Pomona. He is a registered landscape architect in the State of California.

His duties include all facets of project management for a diverse portfolio of clients. He has been a project manager for public agency and commercial campus design; private and public schools and universities; public parks, streetscapes; master planned residential communities, model homes, and multi-family housing.

Mr. Dalman was also our project manager for the landscape maintenance district renovations for the City of Rancho Cucamonga. For this project the City had identified the need to reduce water use, and maintenance costs, of LMD maintained landscape areas #2 & #4 (approximately 4.5 miles). ADG was hired by the City to prepare conceptual planting, irrigation and hardscape design retrofit strategies to update these areas to current City landscape and LMD guidelines. Our focus was on identifying "typical" non-complying planting areas such as medians and parkways, within the LMD Districts, and developing retrofit plans that could be applied District wide in the LMD.

Email: pdalman@architerradesigngroup.com

Site Inspector: Neil Mayes, C27 #1010625



Mr. Mayes provides comprehensive site inspection and review services for ADG. He graduated from Cal Poly, Pomona with a Bachelor of Landscape Architecture and is a licensed landscape contractor in the State of California.

He arrives at ADG with over 15 years of landscape design and construction experience. Most recently he was the owner and licensed contractor of record for Bella Earth Designs, his own design/build business providing construction services to a wide variety of public and private developers.

For the past 2-years with ADG, Mr. Mayes has been providing landscape inspections for the cities of Murrieta, Menifee, Wildomar, and San Gabriel.

Email: nmayes@architerradesigngroup.com

Project Manager – Kay Kite PLA #6760 MLA, ASLA, ASIC, CID, CLIA



Ms. Kite comes to ADG with over twenty-five years' experience as a senior Landscape Architect. Her practice includes site design, campus and urban planning, planting design, and project management. She specializes in water conservation, native plant palettes, and efficient irrigation designs.

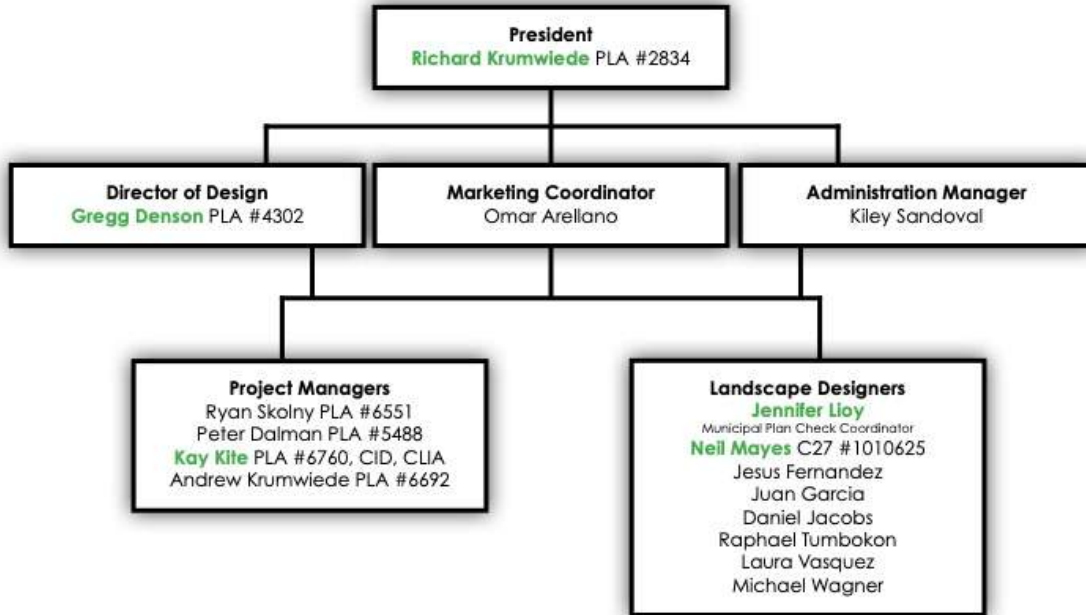
Her experience includes designing small private residences, university campuses, along with commercial and industrial projects. She has worked directly with contractors and maintenance personnel both pre and post construction to provide site inspections and to assist and refine designs for longevity and practicality while maintaining the desired aesthetic.

She received her Master Landscape Architecture (MLA) from Cal Poly Pomona. She is a registered landscape architect with the State of California and a Certified Irrigation Designer (CID) and a Certified Landscape Irrigation Auditor (CLIA).

Ms. Kite can assist the city with water audits, and an added layer of peer review on submitted plans, when needed.

Email: kkite@architerradesigngroup.com

ARCHITERRA DESIGN GROUP ORGANIZATIONAL CHART



Work Plan – Landscape and Irrigation Plan Check Services

TYPICAL APPROACH AND METHODOLOGY FOR PROVIDING SERVICES

We offer the following “Typical Approach” as a model of the scope of services that we will use for undertaking and performing plan check reviews as part of the City’s development review, and construction plan check processes. It includes expected duties and responsibilities as required by the City, as well as other anticipated tasks to complete the work.

Our primary team will consist of Richard Krumwiede (PLA#2834) as the licensed landscape architect of record and principal in charge, overseeing project administration, contracts, and staffing. In addition to Mr. Krumwiede, the City will have the availability of our Director of Design, Gregg Denson, for any input on design reviews to related to accomplishing the listed goals in the RFP.

Municipal Plan Check Coordinator Jennifer Lioy will be the plan check manager and the main point of contact for the City along with providing regular and timely progress reports for all plan review services.

Our project manager, licensed landscape architect Peter Dalman, will provide backup for Jennifer for instances when she is out of the office, providing the City with continuous availability and managerial coordination.

Our in-house site inspector, licensed landscape contractor Neil Mayes (C27 #1010625), will provide inspection services for the City. Mr. Mayes is experienced with the requirements and implementation of various Municipal Landscape Ordinances and is well versed in water-wise and drought tolerant landscape irrigation design. We currently provide landscape inspections for the cities of Wildomar, Murrieta and Menifee. Mr. Mayes will advocate the City's position and conduct field inspections to review conformance with installation per the approved plans.

Communication method and turnaround time frames for landscape and irrigation plan check services: We will provide the City, within 2-business days (48-hours) of receiving the transmittal and review documents, a return notice of receipt and projected completion date for standard services. ADG shall complete initial standard plan checks within 10 calendar days, and 10 days for each subsequent submittal. Should any reasonable cause or condition result in delay of the return review, ADG shall give written notice to the City within 5-business days after initial receipt to request an extension of time to complete services, if needed.

Our reviews will include sufficient detail with our customized plan checklist/matrix, as well as comments and narrative regarding revisions, recommendations, and conditionals of approval. We will use the City's landscape architectural checklist for plan checks. Detailed steps are outlined below in our Scope of Services, which include the City's outlined scope as well as additional items from our experience.

For online capability for electronic plan reviews, we will utilize Blue Beam software, and are open to using additional methods if preferred by the City such as Energov and similar at direction of Planning Staff. We will also utilize the City's available GIS interactive mapping to gather site specific data and requirements to inform our reviews.

Communication method and turnaround time frames for landscape site inspection services: All communications from the City shall be directed to both the Municipal Plan Check Coordinator/Reviewer and the Site Inspector at ADG.

Within 2-business days (48 hours) of the inspection request, receipt of the approved landscape plans and a fully executed Certificate of Completion (including all required attachments) from the City, ADG will contact the applicant to schedule the inspection. Prior to inspection, ADG shall print one (1) copy of the approved plan set and review the plan set to become familiar with the approved landscape and irrigation scope, as well as prepare the inspection report form for the inspection.

ADG shall travel to the site and conduct field inspections within 3-business days (72 hours) of the inspection request, whenever possible. After each inspection, ADG will write-up and provide the City with an "Inspection Report", indicating items of correction or whether the landscape and irrigation installation was in substantial compliance with the approved plans. If not in compliance, the applicant will need to contact ADG to schedule a re-inspection when all correction comments from the report have been addressed. Reports shall be e-mailed in PDF format to the City within 2-business days (24 hours) of inspection.

The Municipal Plan Check Coordinator (Jennifer Lioy) shall be the primary contact for the initial inspection request and review of the documents received from City. The Coordinator is tasked with ensuring ADG has all information required before an initial inspection can be scheduled.

The Site Inspector shall be responsible for delivering the completed "Inspection Report" to the City and notifying the City of compliance or non-compliance with the approved plan set and document any direct communications with the applicant on required corrections and re-inspections.

"Typical" Scope of Services – Landscape & Irrigation Plan Check Review and Site Inspection Services

A. Plan Check Review

1. Receive two printed copies, or digital files, of the submitted Landscape Plans, and reference plans, from City staff.
2. Receive, track, review, and comment on landscape/irrigation design plans in a comprehensive and organized format, utilizing a checklist approved by the City, in accordance with the Water Efficient Landscaping Guidelines. All documents provided by ADG shall be in digital format for returning to the City.
3. Evaluate landscape and irrigation plans for conformance with the goals and policies of the City's General Plan, Zoning Codes, Specific Plans, Objective Design Standards, and applicable Design Guidelines.
4. Review of civil engineer grading plans, as needed, to ensure consistency with landscape plans.
5. Attend virtual or in-person meetings with the City, property owners and applicants to provide comments, recommendations, conditions of approval, and alternative design illustrations. (as requested).
6. Provide comments, revisions, recommendations, conditions of approval, and alternative design illustrations for project submittals. (an example of an alternative design solution may be a simple sketch to convey an idea of how to improve the design)
7. Review plans in a timely manner and in conformance with applicable City, County and State requirements.
8. Review plans for conformance with municipal code requirements, the City's Water Efficient Landscaping Ordinance, WELO, and Fuel Modification plans.
9. Receive all necessary reference material from City staff related to the landscape improvements, such as street improvement plans, grading plans, utility plans, biological reports, fire protection plans, stormwater, etc. Provide open communication with the Planning Division.
10. Review plan base information against provided reference material.
11. Review submitted landscape plans for completeness against the project's conditions of approval.

12. Review and check calculations, testing results, assertions, and other technical portions of reports.
13. Verify that maintenance responsibility is included/indicated on the plans. (ADG is not responsible for maintenance of the project)
14. Advocate the City's position in meetings with developers and/or other consultants.
15. Perform a variety of cost estimates, small studies, general project management activities, and provide general support to City staff.
16. Provide and coordinate redlined comments with City staff and related departments.
17. Return one digital copy of the submitted Landscape Plans to City staff for distribution to the submitting landscape architect.
18. Coordinate with City staff as needed for due diligence, ensuring plan check reviews completed are aligned with the City's vision and any special project-specific circumstances. Maintain availability to coordinate with City staff during business hours.
19. Review of the City's advanced planning projects, including development of residential design guideline and objective design standards, as needed.
20. Attend Design Review Committee (DRC), Planning Commission, City Council, and other City meetings, as requested. (virtual meetings preferred)
21. Create and maintain a system for tracking the review status for project applications and plan checks and provide Planning Division staff with access to tracking system. (example could be through a sharable document such as Google Docs, or the like)
22. Efficiently provide phone and/or meeting consultation to submitting landscape architect (consultant) regarding the prepared redline comments as needed to clarify comments and resolve issues.

B. Site Inspections

1. Assist Planning Division staff with providing technical support at preconstruction meetings, as needed.
2. Assist Planning Division staff with assessing project conformance with approved landscape and irrigation plans. Travel to sites, conduct field inspections, and assist staff as needed to perform inspections of completed development projects and infill properties.
3. Conduct interim inspections as needed during the landscape construction process to ensure installation of irrigation and landscaping complies with the approved construction plans, project conditions of approval, applicable Specific Plan requirements, and the City's Water Efficient Landscape Guidelines.

4. Confer/coordinate with the project landscape architect, contractor, etc., in the field and office as needed to provide direction/clarification on correction issues as needed.
5. Verify that landscape and irrigation audits are conducted by the developer's third-party consultant, as required by the City's Water Efficient Landscape Guidelines.

Quality Assurance Program

Timeliness/Work Schedule

It is understood that time is of the essence. ADG will provide services within the number of calendar days as authorized at the time of the project assignment, after the commencement date specified in the notice to proceed. A project schedule is typically completed by our team utilizing the "Fast Track" scheduling platform, detailing each project's phases and tasks for Client review and approval prior to the start of work. ADG's projects are consistently completed on time, due to our Principals' active involvement during the progression of our projects through weekly project management meetings and proactive staff scheduling.

Our staff meets twice weekly to discuss project status and staff scheduling. This proactive approach includes scheduled meetings every Thursday with project managers to allocate our staff resources for the following week. A second higher-level management meeting, which includes our President, Directors, and Project Managers, occurs first thing every Monday morning, followed immediately by a meeting of all staff members to again review deadlines and expectations for the upcoming week. Our approach ensures proven and consistent results, a focused design team, and projects delivered correctly and on time.

Value Engineering

For design projects, an important element in our firm's success is our ability to meet the Client's construction budgets. Prior to the start of the design process, we thoroughly discuss the Client's anticipated improvement cost for each phase of development. Based on this initial feedback, value-engineering studies are conducted to determine the actual improvements possible to maintain the budgetary constraints. ADG then carefully coordinates all phases of design development with the approved construction budget. This creates projects that are consistently constructed at or below the original estimate of projected cost.

Cost Estimating Process

In support of our Value Engineering process, ADG prepares "Statements of Probable Construction Costs" as required by the project's scope of services. The "Statements of Probable Construction Costs" are prepared using Microsoft Office Excel spreadsheets, which have been developed by our office over the last twenty-five years to accurately estimate our project's costs. The office "master" is updated annually using bid data from

our clients, contractor surveys, and material cost multipliers. "Statements of Probable Construction Costs" are generally prepared during the Schematic Design, Design Development, and Construction Document Phases for in-house and client review, and input.

Quality Standards

Unlike larger firms, our modest size gives our clients the advantage of working with an experienced principal from project start to finish, which increases the level of service and product quality throughout all phases of project development. Our office has developed project design standards, construction document standards, and cost estimating programs, which enable us to provide drawings and projects to our client's, which are consistently higher than the "professional standard of care". Additionally, all projects are reviewed in-house for errors and corrections prior to Client and/or Agency submittals.

Communication with our Clients, regarding their project's progress, is also a part of our quality assurance program. Clients are updated bi-weekly through written "Project Status Reports" prepared by the project manager.

90% of all our business is either repeat business from established Clients or referrals from our Clients and Public Agencies. This is a direct result of our office's high standards for design, construction documents, and client service.

Professional Fees

FEE SCHEDULE – PLAN CHECKING

We propose to provide Plan Checking services, as directed by the City. Our hourly rates listed below would apply to plan check billing on an hourly basis. Rates with escalation for inflation are outlined below.

Rates for the first fiscal year 2024/2025

Plan Check & Site Inspection Services Standard Rate:	\$125.00/hour
Expedited/Overtime Rate:	\$187.50/hour

Rates for the second and third fiscal years 2025/2026 & 2026/2027

Plan Check & Site Inspection Services Standard Rate:	\$135.00/hour
Expedited/Overtime Rate:	\$202.50/hour

Reimbursable Expenses

The following costs shall be reimbursed at cost, and are not included in the Basic Fee for Services:

- Expense of reproductions for generation of original drawings, plan check submittals and construction bidding, including printing, plotting, Xerox copying, photo reproductions.
- All automobile mileage shall be paid at the standard rate for business automobile use as set forth by the Internal Revenue Service.
- Cost of postage and shipping expenses other than first class mail.
- Agronomic Soil Testing.
- Photographic services, film and processing.
- Cost of models, special rendered exhibits, promotional photography, special process printing, special equipment, special printed reports or publications maps and documents approved in advance by Client.
- Agency Processing and fees paid for securing approval of agencies having jurisdiction over the Project. (Plan check fees, variance applications, etc.).
- Fees for additional special consultants retained with the approval of Client.

Conflict of Interest Statement

Architerra Design Group (ADG) agrees and represents that it is not aware of any conflicts of interests or additional relationships that would preclude ADG from performing the services as outlined in the **RFP City of Murrieta Landscape Architect Services Landscape Architectural Review / Plan Check Services**.

If any conflicts of interest should arise in the future ADG will provide written notice in a timely manner to the City and will take appropriate action to determine a proper course of action to the satisfaction City requirements as set forth in the RFP.

Currently, ADG is contracted as an on-call consultant with the City of Murrieta.

References & Relevant Experience

The following is a sample list of recent projects that highlight our unique experience and qualifications as landscape architect for plan check process design, plan review specialists and design consultation services. Examples of Work are included in the Appendix.

In addition to plan check and review services performed by ADG, we have also created procedures, and provided training for several organizations on water wise projects, and plan check methodologies.

MUNICIPAL PLAN CHECK REFERENCES

- 1. City of Wildomar**, (2016-current) Matthew Bassi, Director of Planning, 951-677-7751 x213, 23873 Clinton Keith Road, Suite 201, Wildomar, CA 92595. Email: mbassi@cityofwildomar.org
 - Landscape and Irrigation Design Plan Checking
 - Field Inspections and Reports
 - Preparation of Landscape Architectural City Design Guidelines
- 2. City of San Gabriel**, (2022-current) Samantha Tewart, Planning Manager, (626) 308-2806 ext. 4623, 425 South Mission Drive, San Gabriel, CA 91776. Email: stewart@sgch.org
 - Landscape and Irrigation Design Plan Checking
 - Field Inspections and Reports
- 3. City of Menifee**, (2019-current) Cheryl Kitzerow, Community Development Director, City of Menifee (951) 723-3706, 29844 Haun Road, Menifee, CA 92586. Email: ckitzerow@cityofmenifee.us
 - Landscape and Irrigation Design Plan Checking
 - Field Inspections and Reports
- 4. City of Chino**, (2019-current) Warren Morelion, City Planner, City of Chino (909) 334-3332, 13220 Central Avenue, Chino, CA 91710. Email: wmorelion@cityofchino.org

- Landscape and Irrigation Design Plan Checking
5. **City of Baldwin Park**, (2019-current) Melissa Chipres, Associate Planner, City of Baldwin Park (626) 960-4011 ext. 452, 14403 Pacific Avenue, Baldwin Park, CA 91706. Email: melissac@baldwinpark.com
- Landscape and Irrigation Design Plan Checking

WATER WISE PROJECTS AND SERVICES

Water Efficient Landscape and Irrigation Design Guidelines, City of Wildomar

Prepared a comprehensive Water Efficient Landscape and Irrigation Design Guideline/Document that both Staff and the General Public could use as a practical guide for both *preparation and review* of landscape plans and *reviewing* them.

ADG provided a comprehensive Water Efficient Landscape and Irrigation Design Guideline/Document that formed a backbone of all landscape and irrigation plan submittals, by providing illustrations/graphics and text descriptions demonstrating acceptable landscape and irrigation design.

Website Link to the Landscape Design Guidelines created by ADG:

<https://www.cityofwildomar.org/DocumentCenter/View/390/Wildomar-Landscape-Design-Standards-PDF>

Contact: Matt Bassi, Directory of Planning, City of Wildomar, 23873 Clinton Keith Road, Suite 201, Wildomar, CA 92595 (951) 677-7751 ext. 213.

Water Efficient Landscape and Irrigation Design Guidelines, City of Riverside

Prepared a comprehensive Water Efficient Landscape and Irrigation Design Guideline/Document that both Staff and the General Public could use as a practical guide for both *preparation and review* of landscape plans and *reviewing* them.

ADG provided a comprehensive Water Efficient Landscape and Irrigation Design Guideline/Document that formed a backbone of all landscape and irrigation plan submittals, by providing illustrations/graphics and text descriptions demonstrating acceptable landscape and irrigation design. Updating the existing Administrative Landscape & Irrigation Plan Review Checklist to be reflective of the new Water Efficient Landscape and Irrigation Design Guideline/Document. We also provided a formal training program for Staff, which outlined the basic principles, and key components of good water efficient landscape architectural design and provided Staff with the knowledge needed to conduct landscape plan checks.

Website Link to the Landscape Design Guidelines created by ADG:

https://riversideca.gov/cedd/sites/riversideca.gov.icedd/files/pdf/planning/Citywide_Design_and_Sign_Guidelines_web%20version_Amended%2001-15-19_1.pdf

Contact: Doug Darnell, Community Development Senior Planner, City of Riverside, 3900 Main Street, Third Floor, Riverside, CA, 92522 (951) 826-5219.

PUBLIC/COMMERCIAL BUILDINGS

- Rancho Cucamonga City Hall
- Beaumont City Hall
- Claremont City Hall
- Duarte City Hall
- La Habra City Hall
- Arrowhead Regional Medical Center, Colton
- Inland Empire Health Plan (IEHP), Rancho Cucamonga Campus
- Kaiser Regional Medical Center, Baldwin Park
- Nitrate Treatment Plant, Rancho Cucamonga (CVWD)

RETAIL/COMMERCIAL

- Starbucks (20 locations)
- Panda Express (6 locations)
- Norms Restaurant, Claremont
- Colonies Crossroads Food Court, Upland

NEW PARK PROJECTS & RECREATIONAL FACILITIES

- Civic Center Amphitheater and Park, The City of Moreno Valley
- The Desi (Arnaz) House Park, Eastvale (Jurupa Community Services District)
- Vila Borba Park, The City of Chino Hills
- Yucaipa Performing Arts Center, The City of Yucaipa

PARK RENOVATION PROJECTS

- Hamilton Park Renovation/Redesign, The City of Pomona
- Memorial Park, The City of Upland
- Villegas Park, The City of Riverside
- Hillbrook Park, The City of Signal Hill

STREETSCAPES

- Highland Springs Avenue and Wilson Street Medians, Banning (Tri Pointe Homes)
- Tierra Rejada Streetscape Master Plan, The City of Moorpark

- Spring Road and Championship Drive, The City of Moorpark
- Chino Hills Turf Replacement, The City of Chino Hills
- Medians, Welcome Signs, City Hall & The Veteran's Memorial, The City of Compton
- Duarte Median Turf Replacement, The City of Duarte
- SR-91 Corridor Improvement Project Right-of Way, Corona

HOME DEVELOPER CLIENTS

- Tri Pointe Homes
- Lennar
- Trumark Homes
- Diversified Pacific
- Lewis Management Corp.
- Brookfield
- Forestar

MASTER PLANS

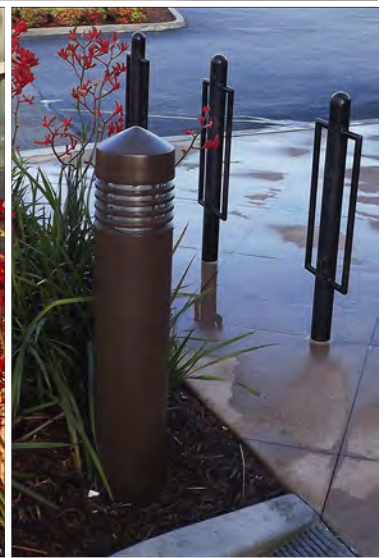
- Our firm has designed numerous city master plans throughout Southern California, including the Park Place Master Plan for the City of Ontario, and the Retreat Master Plan in Riverside County to name a few. Our master plan design experience showcases that we take a big picture approach when reviewing the submitted plans. With our experience and discernment, we can evaluate how the improvements may benefit the City of Murrieta while adhering to the City's Landscape Use & Design. Guidelines.

END



ARCHITERRA
DESIGN GROUP
LANDSCAPE ARCHITECTURE AND PLANNING

Appendix



Norms Restaurant

Bitton Design Group | Claremont, CA

Landscape and Hardscape Design Features:

- Seatwall with Focal Element
- Drought Tolerant Planting
- Pots with Flowering Accents
- Lighting and Bollards
- Bicycle parking racks.
- Restaurant Sign Enhancement
- Bioswale for Runoff Collection
- Enhanced Concrete Paving
- Walls with Matching Veneer
- GreenScreen



ARCHITERRA
DESIGN GROUP



Starbucks Drive-Thru

Architects Orange | Ontario, CA

Other Starbucks Project Locations:

- Beverly Triangle
- Camarillo
- Downey
- El Monte
- Hawthorne
- Inglewood
- Lemon Grove
- Los Angeles
- Miramar MCAS
- Montecito
- North Hollywood
- Norwalk
- Palm Desert
- Paramount
- Santa Monica
- Stockton
- South El Monte





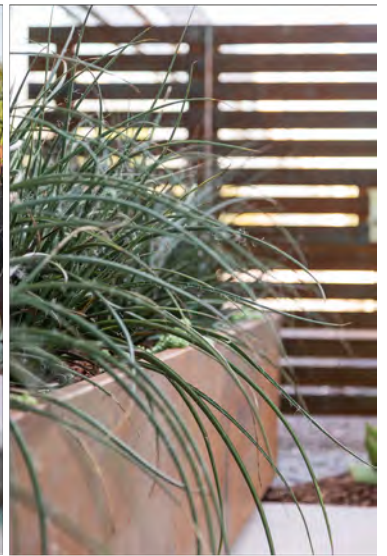
IEHP

Comprehensive Campus Landscape Design

The IEHP (inland Empire Health Plan) Campus covers approximately 51 acres in Rancho Cucamonga CA. The site has two large office buildings with landscaped parking areas and a central landscaped core sitting between the buildings. IEHP now owns both buildings and desired to create a unified campus that emphasizes the ideas of health, well-being, personal and social communication and the ability to disconnect from the traditional office environment. Architerra's role was to renovate the central 5-acre core space and create a dynamic, sinuous landscape.



ARCHITERRA
DESIGN GROUP



Kaiser Permanente Baldwin Park Rooftop Serenity Garden | HMC Architects

Landscape and Hardscape Design Features:

ADG teamed up with HMC Architects to design and build the new serenity rooftop garden at Kaiser Permanente in Baldwin Park. Kaiser is recognized as one of America's leading health care providers. The outdoor garden offers a quiet space for recreation and reflection, benefitting patients and visitors alike. We are honored to team with world class partners to create fundamental and inspiring spaces.





Civic Center Amphitheater Park

Moreno Valley, CA

8-acre Civic Center Municipal Amphitheater. Conceptual designs for the outdoor amphitheater include a fully operational public performance stage, terraced seating for 500-600 audience, and an informal sloped lawn area for potential overflow seating.



ARCHITERRA
DESIGN GROUP

Creativity. Service. Environment.



ARCHITERRA
DESIGN GROUP
SINCE 1991

ARCHITERRADESIGNGROUP.COM
10221-A TRADEMARK STREET RANCHO CUCAMONGA CA 91730 | PHONE (909)484-2800 FAX (909)484-2802
CA #2834, AZ #29115, NV #446, OR#841, NM, #538