





Murrieta Hills Specific Plan - City Council Voting District

Cristal McDonald, City Clerk

September 5, 2023

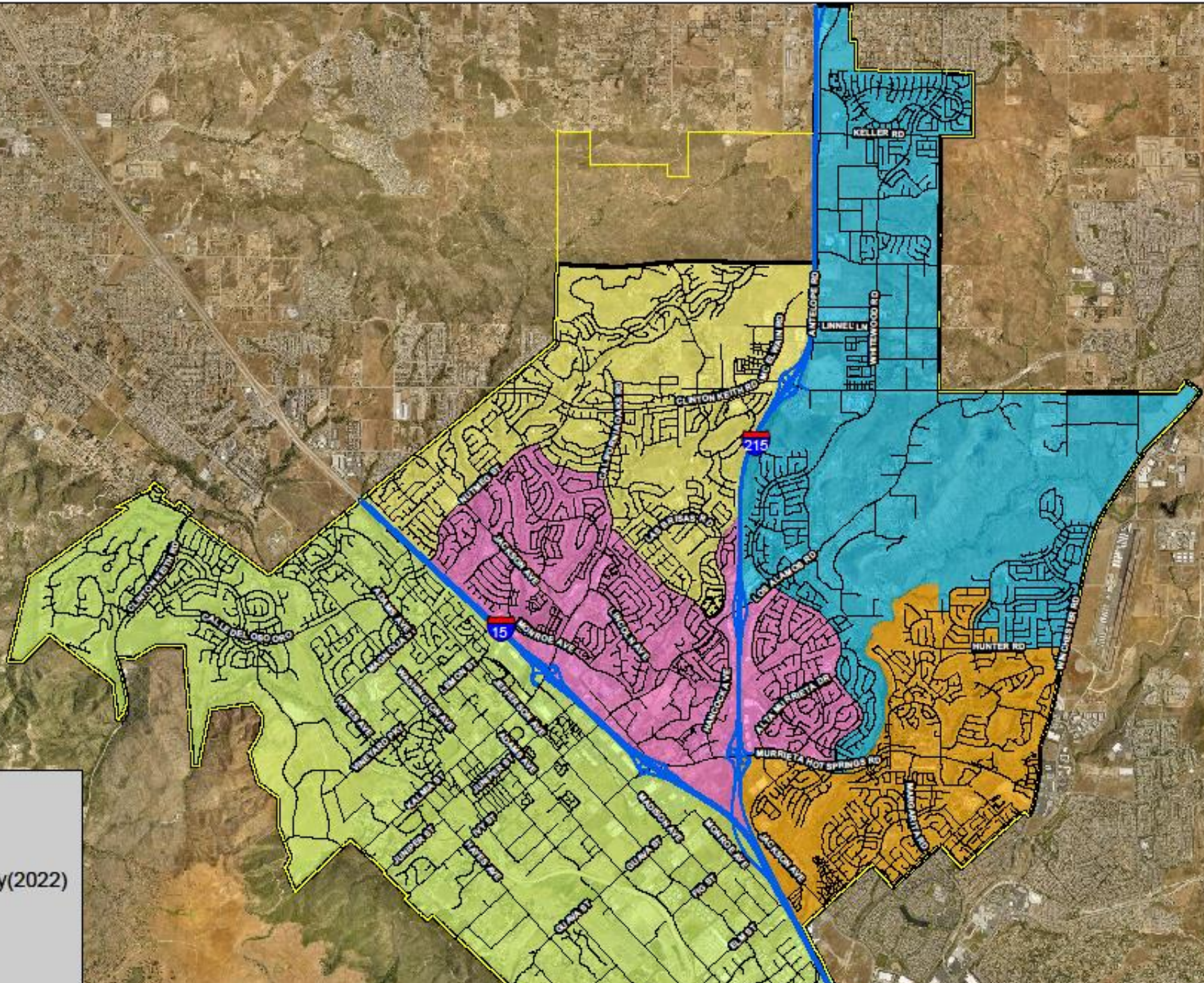


Legend

-  City Boundary
-  Old City Boundary(2022)

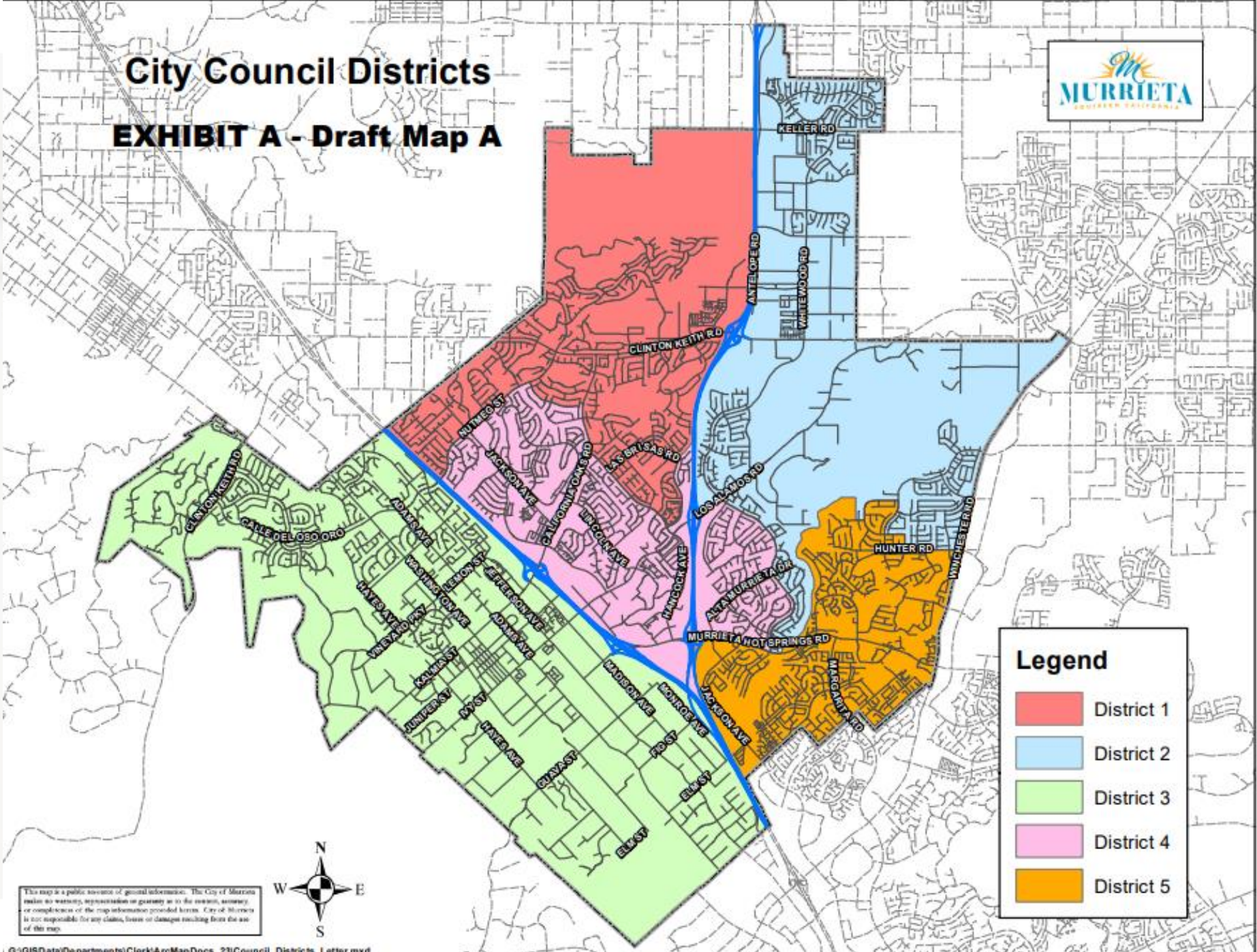
Council Districts

-  District 1
-  District 2



City Council Districts

EXHIBIT A - Draft Map A

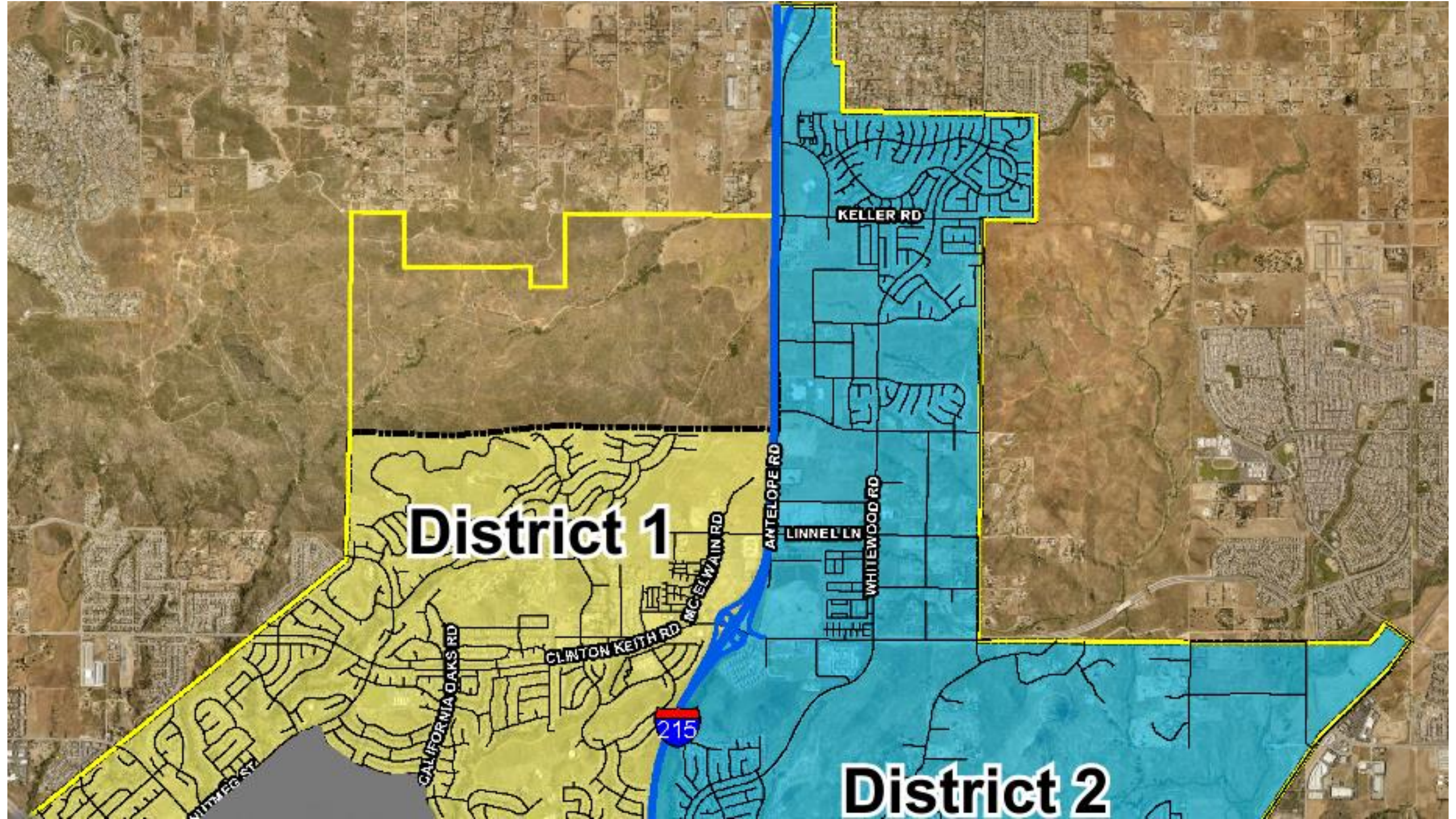


Legend

- District 1
- District 2
- District 3
- District 4
- District 5

This map is a public review of geospatial information. The City of Murrieta makes no warranty, representation or guarantee as to the accuracy, timeliness or completeness of the map information provided herein. City of Murrieta is not responsible for any claims, losses or damages resulting from the use of this map.





District 1

District 2

KELLER RD

ANTELOPE RD

LINNEL LN

WHITEWOOD RD

CALIFORNIA OAKS RD

CLINTON KEITH RD

MC ELWAIN RD

215

Recommendation

- 1) Hold a public hearing to receive input and testimony;
- 2) Conduct the second reading and adopt Ordinance No. 594-23 entitled: *An Ordinance of the City Council of the City of Murrieta, California, Amending Section 1.21.030 of the Murrieta Municipal Code and Adopting Revised District Voting Boundaries*, into District 1; and
- 3) Direct the City Clerk to fulfill any administrative requirements in accordance with the law.

