



Regional Homeless Alliance

City of Murrieta
City Council
September 17, 2024

Baker Tilly
Carol Jacobs, Managing Director
Susan Price, Special Advisor

Southwest Riverside County Goal

“Establish regional strategies that address the needs of the five Regional Homeless Alliance (RHA) communities, residents, businesses, and those experiencing homelessness.”



Regionalized
collaboration
WORKS!



RHA Report Overview



Engagement objectives



Development of a regional approach



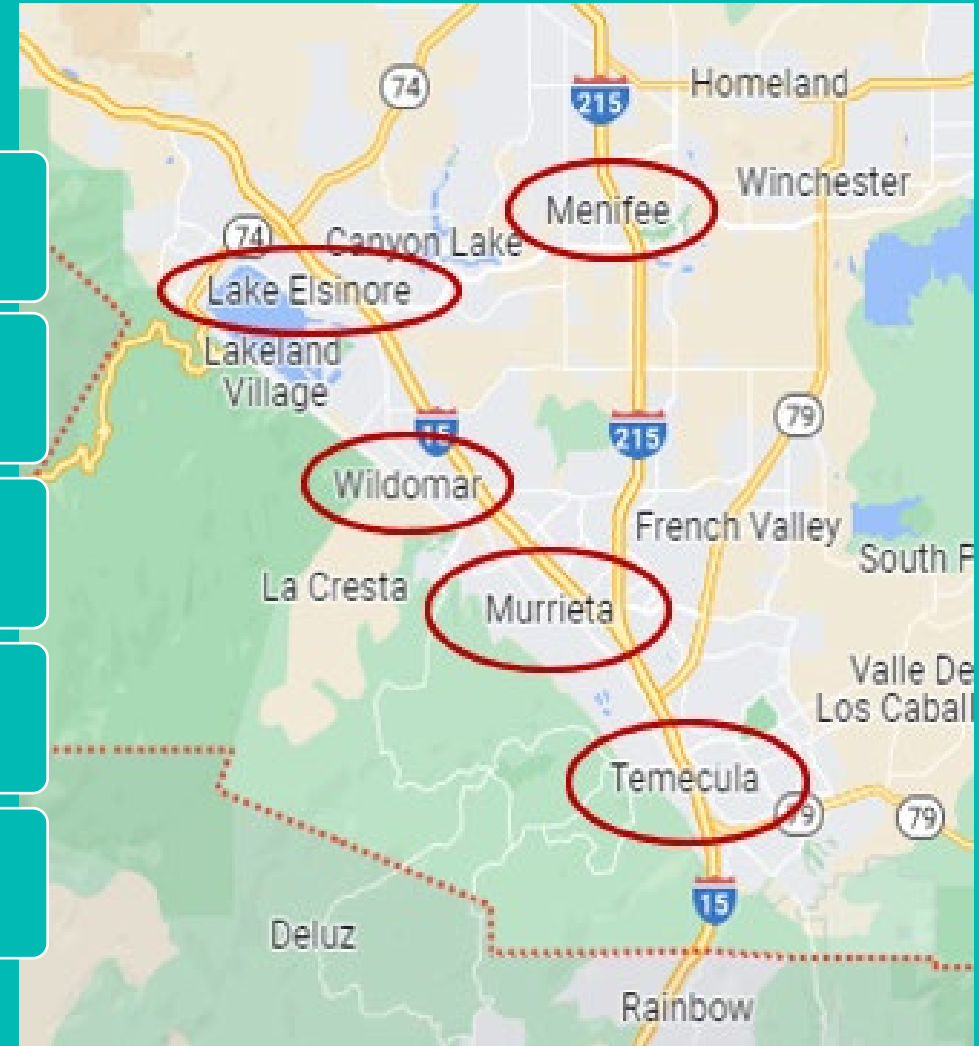
Themes from interviews, site visits, and other data sources



Resource inventory and gaps analysis



26 recommendations



Key stakeholder interview themes

Met with representatives from all five cities

Common **themes** emerged:

- Improved **behavioral health crisis response and treatment options**
- Greater connectivity to the **Continuum of Care system for resources and funding opportunities**



Key stakeholder interview themes

- Need to improve **participation** in Homeless Management Information System (HMIS) **data systems, and create standard data collection protocols for the RHA**
- Need for **better coordination and integration of efforts:**
 - Encampment response and protocols
 - Regionalize street outreach
 - Grant funding



Street outreach engagement

- Overall, **staff were familiar with individuals** due to repeated contacts
- Encampment **areas are multi-jurisdictional** (private, ecologically protected, State-owned, City-owned, etc.) and **present unique legal challenges** to encampment response



Street outreach engagement

- Areas linked to **transit, hospitals, libraries, and shopping/commercial centers** are repeated outreach response locations
- Limited access to **same-day interim shelter beds**
- Need for **mental health and addiction treatment resources**



Point-in-Time Count (PIT), 2022 compared to 2023

		2022 ²			2023 ²		
Jurisdiction	Population ¹	Unsheltered	Sheltered	Total Homeless Population	Unsheltered	Sheltered	Total Homeless Population
Lake Elsinore	70,265	35	40	75	78	32	110
Menifee	103,227	28	4	32	25	0	25
Murrieta	110,949	12	149	161	33	132	165
Temecula	110,003	28	39	67	35	38	73
Wildomar	36,875	7	14	21	10	36	46
TOTAL RHA	431,319	110	246	356	181	238	419

Sources:

¹ U.S. Census data based on 2020 Decennial Census

² Housing and Workforce Solutions, Homeless Point-in-Time Count and Survey, 2022 and 2023



Need for additional resources – repeat contacts

City	2022 PIT Unsheltered Count	2023 PIT Unsheltered Count	Duplicative Contacts with Resource-Declining Persons	Available Beds ¹
Lake Elsinore	35	78	20 to 25	16
Menifee	28	25	10	12
Murrieta	12	33	15 to 18	166
Temecula	28	35	30 to 40	48 ²
Wildomar	7	10	6 to 10	38
TOTALS	110	181	81 to 103	Occupancy 96% in 2023 PIT

¹ Interim bed counts are provided by Project Touch and The Anchor and include beds designated for both families and individuals.

² This count includes six beds provided by The Ranch, which is operated by SWAG, but is located outside of the RHA region.



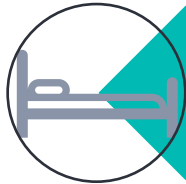
Highlights of existing resources



Multidisciplinary street outreach staffing



Formal encampment response protocols



265 interim shelter beds within the RHA



Funding sources: General Fund and grants

Homeless Service Framework



1. Shared data on individuals to improve outcomes.



2. Funding to improve the overall response to homelessness.



3. Increase in County resource allocations to meet the RHA cities' homelessness needs.

Main Priorities for RHA Collaboration

Benefits of a regional approach

Regionalize street outreach and encampment response funding

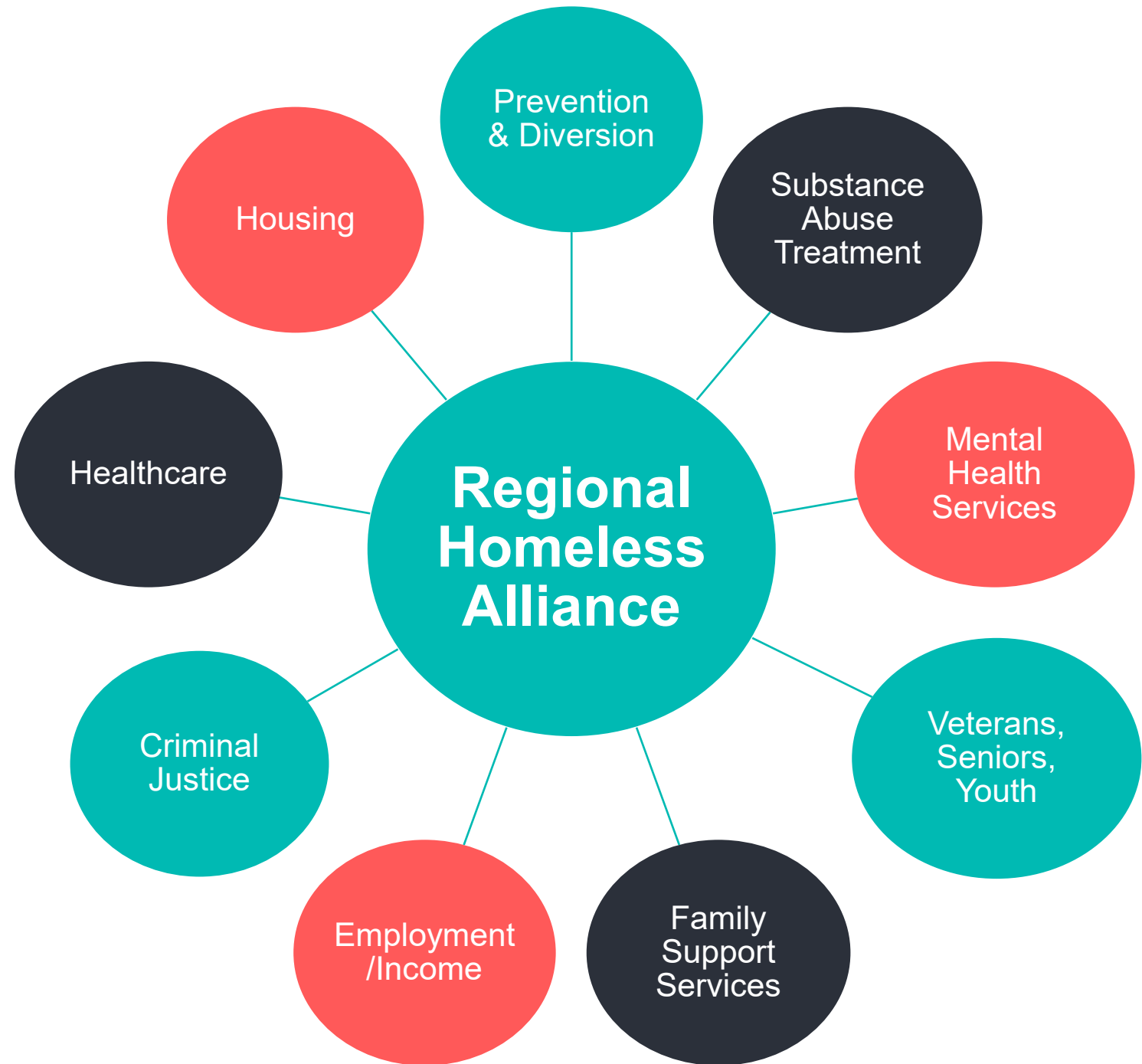
Points-of-entry and same-day access to, shelter beds

RHA participation in Countywide HMIS, CES, and housing resources

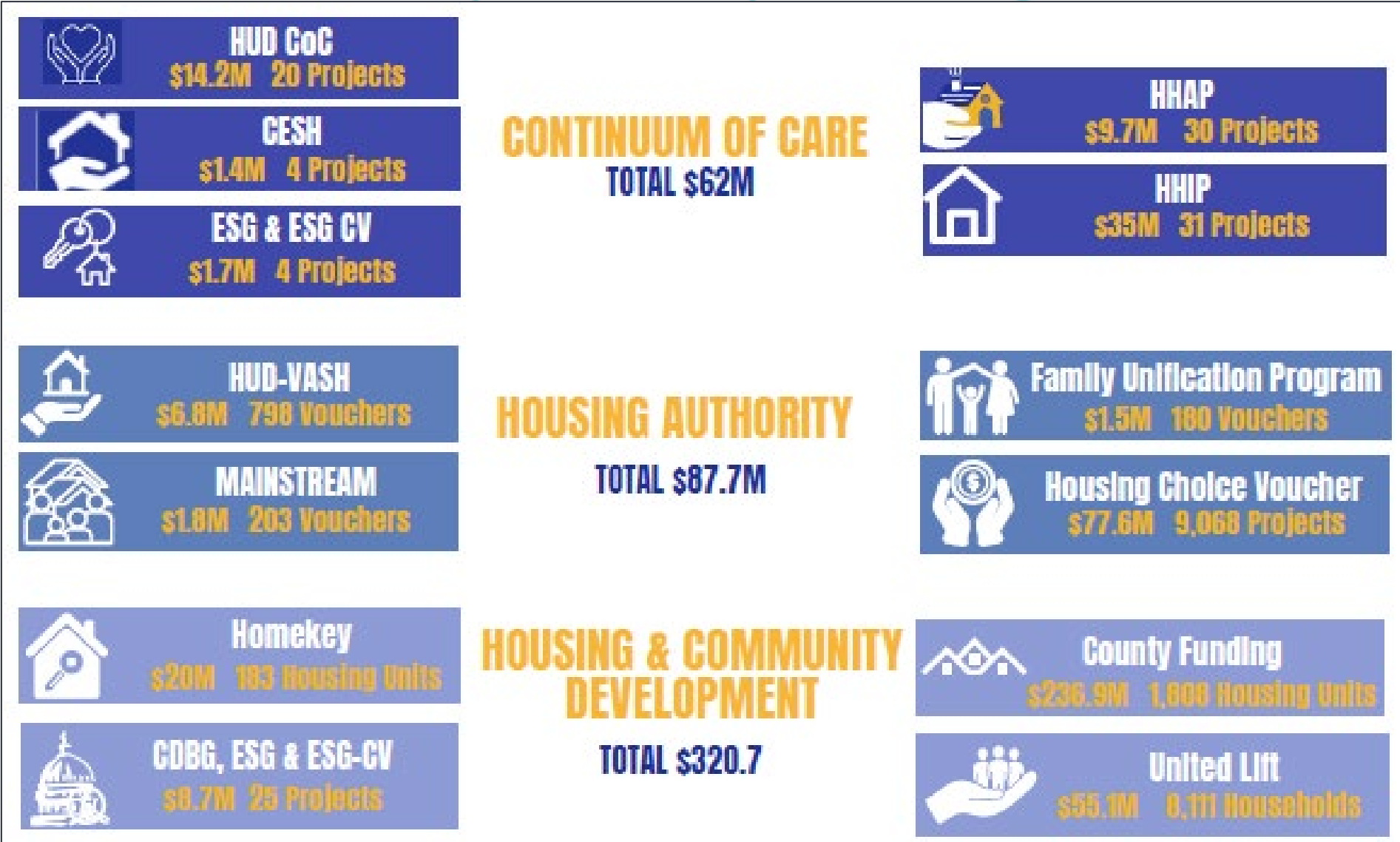
Regional partnerships improve capacity, increase funding and promote strong advocacy

Collective impact: reduction in street homelessness

County, Continuum of Care, and Community Partners



Riverside County homeless funding and programs



Source: 2023 Riverside County Continuum of Care Homeless Point-in-Time Count Summary.



Report recommendations

26 recommendations around the following categories:

- **Data** collection and sharing
- **Prevention**
- **Access** points and street **outreach**
- Encampment response with **resource linkages**
- **Medical and behavioral health**
- Interim and same-day **shelters**
- **Collaboration** with the County's Continuum of Care
- County and State homelessness **funding**
- Development of **affordable housing**
- Regional Homeless Alliance **governance**



Regional Implementation Action Plan

- **Regionalize** street outreach teams
 - One “by name” list for the RHA
- **Streamline** data collection and participation
 - Homeless Management Information System (HMIS)
- **Actively** participate in the Riverside Continuum of Care
 - Funding for homelessness efforts
 - Housing
- **Integrate** efforts with the County
 - Behavioral health



Five Cities – One Regional Homeless Alliance

- **Purpose**

- Align street outreach, share data, leverage resources, build capacity, and secure regional funding grants.

- **Role of Cities**

- Provide leadership to align efforts, integrate resources, and advocate for policy, funding, and resources.

- **Build upon existing framework**

- Identify leadership structure, create subgroups for data, CoC participation, and grant funding.



Five Cities – One Regional Homeless Alliance

- **No cost MOU** to formalize the RHA
- Determine the **leadership structure** and create working subcommittees
- Incremental progress to **align data**
- Encampment Resolution Grant application is pending for **\$12 million**.
- **Integration with County** for behavioral health and street medicine programs



Questions?

Carol Jacobs, Managing Director | carol.jacobs@bakertilly.com

Susan Price, Special Advisor | susan.price@bakertilly.com

